

# Sustainable Collection



# Being Mindful

Corporate Social Responsibility (CSR) is a concept whereby we recognise that our business operations and processes may have an impact on social, economic, and environmental issues outside of the workplace. It also demonstrates our commitment to ensuring and maintaining socially responsible behaviour in our organisation. We believe that the way we run our business can and should make a positive difference in these areas and we aim to ensure that continued authentic efforts are made to achieve that.

Our corporate social responsibilities are identifiable in the following areas:

**OUR PEOPLE**

**THE ENVIRONMENT**

**OUR SUPPLIERS**

**THE LOCAL COMMUNITY**

**OUR CUSTOMERS**

**OUR PRODUCTS**

You can view our full Corporate Social Responsibility Policy on our website. Please contact us for any further information on our policy on 44(0)20 8591 6770 or email [hello@protocolfurniture.com](mailto:hello@protocolfurniture.com)



# OVERVIEW

We work with selected manufacturing partners who demonstrate their commitment to sustainable design in various way. This includes using recycled materials in production, producing furniture that is 100% recyclable at end of life, using solar power energy in their factories and not using toxic chemicals in production processes. Our Sustainable brochure highlights a selection of products that we can offer with sustainable properties and does not represent our full product offering.

- MADE FROM RECYCLED MATERIALS . . . . . **P4-P11**
- RECYLABLE AT END OF LIFE . . . . . **P12-P13**
- MADE FROM FSC CERTIFIED WOOD . . . . . **P14-P16**
- MADE FROM PEFC CERTIFIED WOOD . . . . . **P17-P19**
- SUSTAINABLE UPHOLSTERY . . . . . **P20-P23**





A large stack of metal chairs, likely made from recycled materials, is shown in a warehouse or factory setting. The chairs are arranged in rows, and the metal frames are visible. The text "MADE FROM RECYCLED MATERIALS" is overlaid in the center of the image.

**MADE FROM  
RECYCLED  
MATERIALS**





Hug 2380



Hug 2382



Ginevra 2377



Ginevra 2378



Lisa 2880



Lisa 2881



Lady B 2700



Sai 2275



Pure Loop 5034-4LGP



Pure Loop 5034-4LCP



Feluca Pop 5091-4LGP



Feluca Pop 5091-BSTP







**Bolonia 8072**



**Bolonia 7207**



**Bolonia 9152**



**Bolonia 8065**



**Bolonia 8073**



**Paradiso 8084**



**Paradiso 8126**



**Paradiso 8085**



**Puerto 8086**



**Puerto 8088**



**Olivo 9133**



**Olivo 9164**







Contour ORIC1



Contour ORIC2



Contour ORIC3



Contour ORIC4



Ratio ORIR1



Ratio ORIR2



Stripe ORIS1



Stripe ORIS2



Vine ORIV1



Paradiso 9263



Arena 9277



Bolonia 9301





Doga 255



Doga 254



Doga 256



Doga 042



Stack Maxi 358



Stack Mini 357



Combo 70 032



Sipario 2



To Me 233



To Me 234



Lilibet 373



Lilibet 374





Ibiza 65040



Ibiza 65044



Ibiza 65039



Ibiza 65045



Africa 65036



Africa 65005



Africa 65029



Love 65042



Brooklyn 65037



Brooklyn 65038



Remind 3730R



Remind 3735R





**Souvenir 550R**



**Souvenir 555R**



**Gossip 621R**



**Babila XL 2754**



**A Frame Picnic Bench**



**Toledo REST1**



**Tokyo RESTO1**



**Steeley RESS1**



**Woody RESW1**



**Woody RESW2**



**Epica Eco**



**Alhambra Eco**





Shoreditch E Frame



Shoreditch R Frame



Shoreditch K Frame



Shoreditch E Frame



Lorette 5711



Lorette 5712



Luxembourg 4104



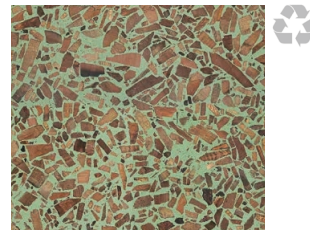
Luxembourg 4112



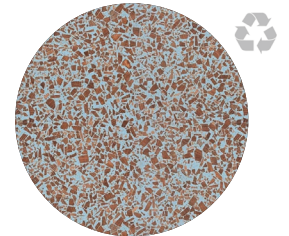
Luxembourg Table



1900 2232



Fresso Square Top



Fresso Round Top





**RECYCLABLE AT  
END OF  
PRODUCT LIFE**



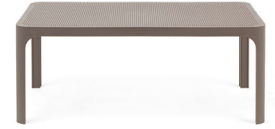
**Bit 327**



**Net 326**



**Net 355**



**Net 064**



**Costa 245**



**Costa 244**



**Folio 300**



**Rio Bench 490**



**Lisa 2870**



**Lisa 2869**



**Lisa 2871**



**Lisa 2884**





**MADE FROM FSC  
CERTIFIED WOOD**



**Babila 2700**



**Babila 2703**



**Malmo 390**



**Malmo 236**



**Nemea 2830**



**Nym 2830**



**Nym 2835**



**Nym 2839**



**Tivoli 2800**



**Tivoli 2805**



**Fox 3727**



**Hera 2865**





Vega Chair



Cindy Chair



Newton Chair



Chilly Chair



Twins 6040



Twins 6041



Twins 6042



Twins 6060



Si-Si 2515



Si-Si 2514



Shine 247-T



Shine 254



A large stack of light-colored wooden beams, likely made of PEFC certified wood, is shown in a factory setting. The beams are stacked in a way that shows their length and the circular ends. The background is slightly blurred, showing other parts of the factory and workers.

**MADE FROM PEFC  
CERTIFIED WOOD**





Nature CO.2330



Bette Liras CD.1576



Bette CD.0411



Bette BA.03V0



Twist CO.3632



Tape MD.3812



Even Cord CD.2568



Dueto CO.0429



Hullahoop CO.3677



Hullahoop CO.3678



Palmar CO.3688



Palmar MQ.3763



Camille M986WW



Camille M986CWW



Camille M988WW



Chloe MM1001



Bizu M1130 UW



Bizu M1131 UW



Joanne M951UW



Joanne M951CUW



Alvito MC508.P5



Alvito MM506.P5



Annie M1100



Annie M1102



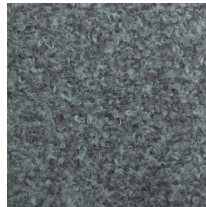


# SUSTAINABLE FABRICS – COCOON

Cocoon is a new member to Malone Fabrics and is Incredibly comfortable, durable, easy to clean and sustainable. It's available in 25 lifestyle colours and is as low carbon footprint as it gets. The production of the Cocoon range does not contain any PFC chemicals, nor does it use water to grow the fibres or to dye the fabrics.



**Cocoon - 188020**  
Malone Fabrics



**Cocoon - 181009**  
Malone Fabrics



**Cocoon - 181009**  
Malone Fabrics



**Cocoon - 181009**  
Malone Fabrics

# SUSTAINABLE FABRICS – LEOPOLD

Leopold is a contract standard, plain boucle fabric who's unique texture and tactile nature oozes high quality and refinement. This durable fabric is woven using 100% Repreve recycled polyester, includes a flurocarbon (PFC) free easy clean treatment and halogen free FR. Leopold is fully REACH compliant and manufactured to Oeko Tex Standard 100.



**Leopold Slalom 4220**  
Sunbury Design



**Leopold Miso 4212**  
Sunbury Design



**Leopold Firefly 4206**  
Sunbury Design

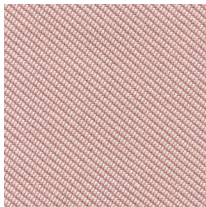
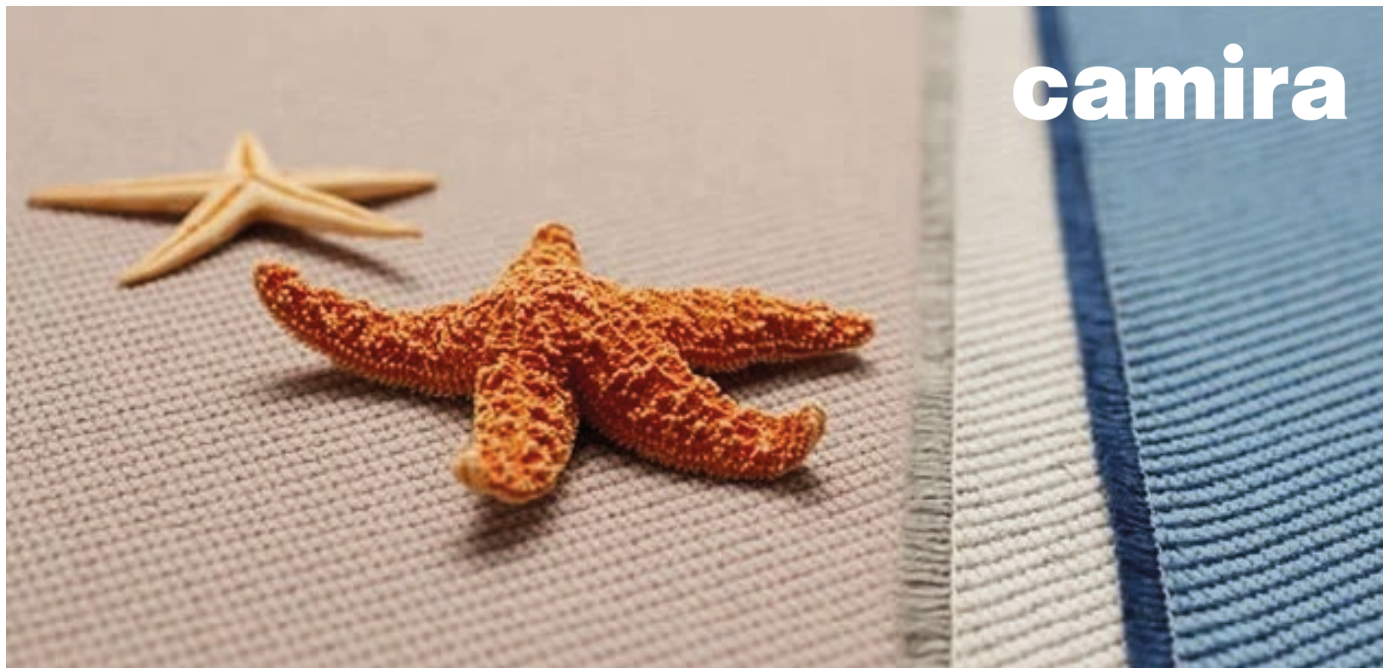


**Leopold Hamilton 4208**  
Sunbury Design

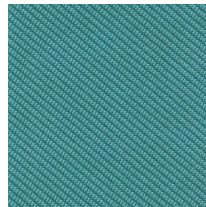


# SUSTAINABLE FABRICS – OCEANIC & XTREME

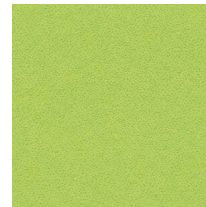
OCEANIC is a durable woven textile, made entirely from recycled plastics taken from both land and sea, with each metre containing the equivalent of 26 plastic bottles. Xtreme is a modern crepe weave fabric made from 100% post-consumer recycled polyester, diverting waste from landfill and saving virgin raw materials.



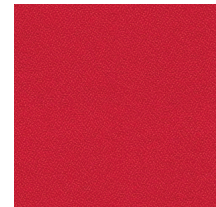
**Oceanic Seafarer OOC16**  
Camira



**Oceanic Jetsam OOC02**  
Camira



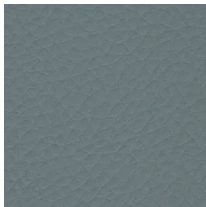
**Xtreme Madura YS156**  
Camira



**Xtreme Belize YS105**  
Camira

# SUSTAINABLE FABRICS – SILEATHER

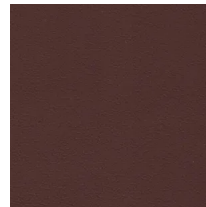
Sileather offer a performance faux leather made of 100% silicone. It is a unique material because of its eco friendly status being made from one of the most common elements found in nature. Not only is silicone less intrusive on the environment, but the production of it is less taxing on natural resources. It takes less water, raw material and electricity to produce when compared to PU and PVC.



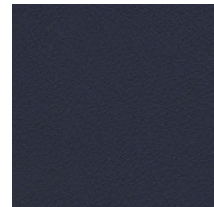
**Sileather - Premier Stone**  
Made from 100% silicone



**Sileather - Premier Pearl**  
Made from 100% silicone



**Sileather - Theory Pecan**  
Made from 100% silicone



**Sileather - Original Navy**  
Made from 100% silicone



Let us join you on your  
design journey.

+44 (0)20 8591 6770  
hello@protocolfurniture.com  
protocolfurniture.com

41 Tallon Road,  
Hutton, Brentwood  
CM13 1TG United Kingdom